

Software

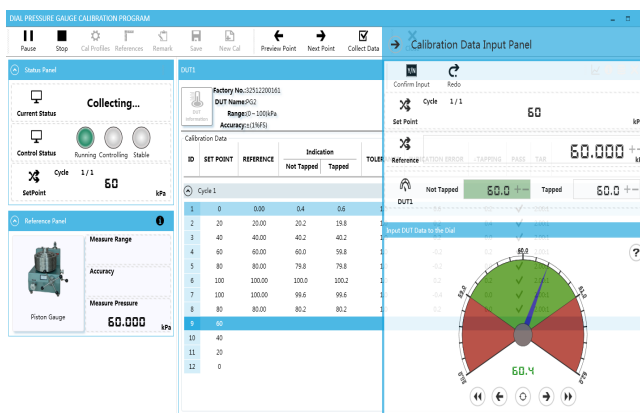
ACal

Additel ACal is a powerful software package designed to automate or semi-automate pressure calibrations and manage your laboratory. ACal combines the pressure automation features with lab and asset management functions to help make your job easier and more productive. ACal comes in three versions: Basic, Professional, and Network.

ACal Basic supports asset management and task management features. ACal Professional is a single PC installation which combines all the features of Basic with automation functionality. And ACal Network puts the Professional version on a multi-user network platform.

MAIN FEATURES

- Supports multi-users and network environments
- Calibration and asset management
- Simple user interface
- Scanning and printing of QR codes
- User definable permissions and access levels
- Preset test configurations
- Can calibrate variety pressure instruments
- Can calibrate several instruments at a time
- Calibration planning and scheduling
- Certificate management and creation
- Certificate customization



SPECIFICATIONS

		ACal Network	ACal Professional	ACal Basic
Network feature	Data sharing	√	×	×
	Multiple users	√	×	×
Upgrade availability	Upgrade to ACal Professional	N/A	N/A	√
	Upgrade to ACal Network	N/A	√	√
DUT supported	Type	Dial gauge Digital gauge Pressure transmitter Pressure switch		
	Full automatic calibration	√	√	×
	Calibration management	√	√	√
DUT management	DUT info management	√	√	√
	Calibration due date reminder and scheduling	√	√	√
Reference management	Reference info management	√	√	√
	Calibration due date reminder and scheduling	√	√	√
Calibrator Task Management	Task download	√	√	√
	Task upload	√	√	√
Bar coding	Bar code scanning	√	√	×
	Bar code creation	√	√	×

ORDERING INFORMATION

Model Number	Description
9530-BASIC	Additel/ACal Automated calibration software with asset management, basic version
9530-BASIC-L1	Additel/ACal Automated calibration software with asset management, basic version additional license (9530-BASIC must be purchased prior to any additional licenses)
9530-PRO	Additel/ACal Automated calibration software with asset management, professional version for single PC
9530-PRO-L1	Additel/ACal Automated calibration software with asset management, professional version for single PC additional license (9530-PRO must be purchased prior to any additional licenses)
9530-NET	Additel/ACal Automated calibration software with asset management, network version, Includes server installation and 1 user license
9530-NET-L1	Additel/ACal, Additional License, Automated calibration software with asset management, network version, Includes 1 user license (9530-NET must be purchased prior to any additional licenses)

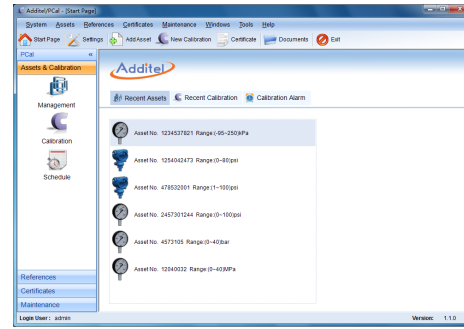


9506 Additel/PCal

The Additel PCal Pressure Calibration software is used with the 681 pressure gauges, 672 calibrators, and any of the 9XX pumps.

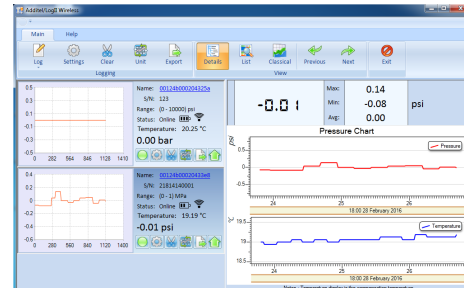
Semi-automated calibration of pressure gauges, transmitters, transducers and other pressure devices can be performed.

Software can be used to manage reference standard instruments and devices under test, as well as generate and customize a calibration certificate.



9502 Additel/Log II & 9503 Additel/Log II Wireless

Additel/Log II is a real-time data logging and graphical software for the ADT681 series digital pressure gauges and the ADT672 series digital pressure calibrators. Data can be recorded in real-time and for the ADT681 data logging version, recorded results can be uploaded. After results are stored, they can be exported to a customizable report showing pressure and ambient temperature. Each real-time test can be tagged with a unique record name.



Additel/Log II Wireless is a real-time data logging and graphical software for the ADT680W series wireless digital pressure gauge. Data can be recorded in real-time and historical data in the gauge can be uploaded. After results are stored, they can be exported to a customizable report showing pressure and ambient temperature. Each real-time test can be tagged with a unique record name.

The software lets you acquire data to your PC. You can choose to display the real-time or historical pressure measurement data in a table or in a graph.

9510 Additel/Cal

Task management software for the 22XA series multifunction process calibrators and the 761 series automated pressure calibrators.

Additel/Cal was designed specifically for task management of temperature and pressure calibration.

The main features include establishing a database of all reference and test instruments, maintaining a customer database, creating, uploading and downloading calibration tasks, generating a calibration report, and customizing the calibration certificate.

No.	Identif.	Type	Serial Number	Model	Calibration Frequency	Next Cal Date	Manufacturer	Location	Customer
1	Task_001	Pressure Transmitters			Annual	2014-03-01			
2	Task_001	Digital Pressure Gauges			Annual	2014-03-01			
3	Task_002	Digital Pressure Gauges			Annual	2014-03-01			
4	Task_003	MP Connectors			Annual	2014-03-01			
5	Task_004	Digital Pressure Gauges			Annual	2014-03-01			
6	Task_005	Pressure Transmitters			Annual	2014-03-01			

No.	Serial Number	Ass. Indicator(s)	Desc. Indicator(s)	Hysteresis	Indicator
1	0	0.00	0.00	0.00	0.00
2	0.25	0.25	0.25	0.00	0.00
3	0.5	0.50	0.50	0.00	0.00
4	0.75	0.75	0.75	0.00	0.00
5	1	1.00	1.00	0.00	0.00

9500 Additel/Land & Additel/Land Wireless

With Additel/Land software, you may download test results stored in the internal memory of Additel calibrators to a PC, and export the results to an excel file. It is a free software package and can be downloaded at www.additel.com.

Model	Serial Number	Firmware Version	Pressure Span
ADT672	2731110023	V02.05	(0 to 4) MPa
ADT 761	8111020010C	APC V02.03	
ADT 223A	00000000	DPC V02.32	