

CENTER

300 Series THERMOMETER



CENTER 300

- TIMER Function
- Auto Power Off
- RS-232 Interface
- REL Function
- HOLD Function
- MAX AVG MIN Function
- Resolution 0.1°C 0.1°F
- Low Battery Indication

K TYPE



CENTER 301

- Dual Input
- Dual Display
- Auto Power Off
- RS-232 Interface
- REL Function
- HOLD Function
- MAX AVG MIN Function
- Resolution 0.1°C 0.1°F
- Low Battery Indication

K TYPE



CENTER 302

- TIMER Function
- K, J Type Thermocouple
- Auto Power Off
- RS-232 Interface
- REL Function
- HOLD Function
- MAX AVG MIN Function
- Resolution 0.1°C 0.1°F
- Low Battery Indication

K, J TYPE



CENTER 303

- Dual Input
- Dual Display
- K, J Type Thermocouple
- Auto Power Off
- RS-232 Interface
- REL Function
- HOLD Function
- MAX AVG MIN Function
- Resolution 0.1°C 0.1°F
- Low Battery Indication

K, J TYPE



CENTER 305

- Triple Display
- Auto Power Off
- RS-232 Interface
- 16,000 Records Data logger
- With Window Software
- REL Function
- TIME Function
- MAX MIN Function
- Resolution 0.1°C 0.1°F
- Low Battery Indication

Data Logger



CENTER 306

- Dual Input
- Triple Display
- Time Function
- RS-232 Interface
- With Window Software
- 16,000 Records Data logger
- Auto Power Off
- REL Function
- MAX MIN Function
- Resolution 0.1°C 0.1°F
- Low Battery Indication

Data Logger

CENTER

300 Series THERMOMETER

FEATURES

Model	CENTER 300	CENTER 301	CENTER 302	CENTER 303	CENTER 305	CENTER 306
Input Channel	Single	Dual	Single	Dual	Single	Dual
K Type Sensor	•	•	•	•	•	•
J Type Sensor			•	•		
RS-232 Interface	•	•	•	•	•	•
Data Logger					•	•
REL Function	•	•	•	•	•	
TIME Function					•	•
TIMER Function	•		•			
HOLD Function	•	•	•	•	•	•
MAX/MIN Function	•	•	•	•	•	•
Auto Power Off	•	•	•	•	•	•

SPECIFICATIONS

Range: K Type -200 ~ 1370°C (-200 ~ 2498°F)	•	•	•	•	•	•
Range: J Type -200 ~ 760°C (-200 ~ 1400°F)			•	•		
Accuracy	± 0.3% + 1°C ± 0.3% + 2°F	± 0.3% + 1°C ± 0.3% + 2°F	± 0.1% + 0.7°C ± 0.1% + 1.4°F	± 0.1% + 0.7°C ± 0.1% + 1.4°F	± 0.2% + 1°C ± 0.2% + 2°F	± 0.2% + 1°C ± 0.2% + 2°F
Resolution	0.1°C / 0.1°F					

GENERAL

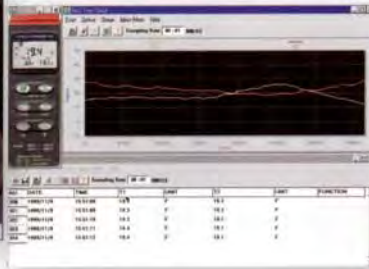
Input Protection	60V DC or 24Vrms Maximum
Operation Temp.	0°C ~ 50°C
Storage Temp.	-20°C ~ 60°C
Battery	9V, NEDA 1604, IEC 6F22, JIS 006P
Dimensions	184(L) x 64(W) x 30(H)mm
Weight	Approx. 210g

RS-232 Software for Windows 95/98 NT4.0

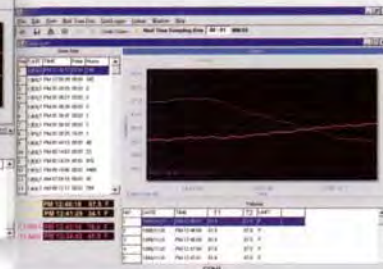
Main Control Window



Real Time Graphic Window



Data List Window



Triple Display



Option Accessories



Accessories

Model	CENTER 300	CENTER 301	CENTER 302	CENTER 303	CENTER 305	CENTER 306
Battery	•	•	•	•	•	•
Manual	•	•	•	•	•	•
Carrying case	•	•	•	•	•	•
K Type bead sensor	TP-K01x 1	TP-K01x 2	TP-K01x 1	TP-K01x 2	TP-K01x 1	TP-K01x 2
RS-232 Cable	Option	Option	Option	Option	•	•
Software	Option	Option	Option	Option	•	•